

# Parcel 9 East Building

Final Plan Approval  
December 18, 2024



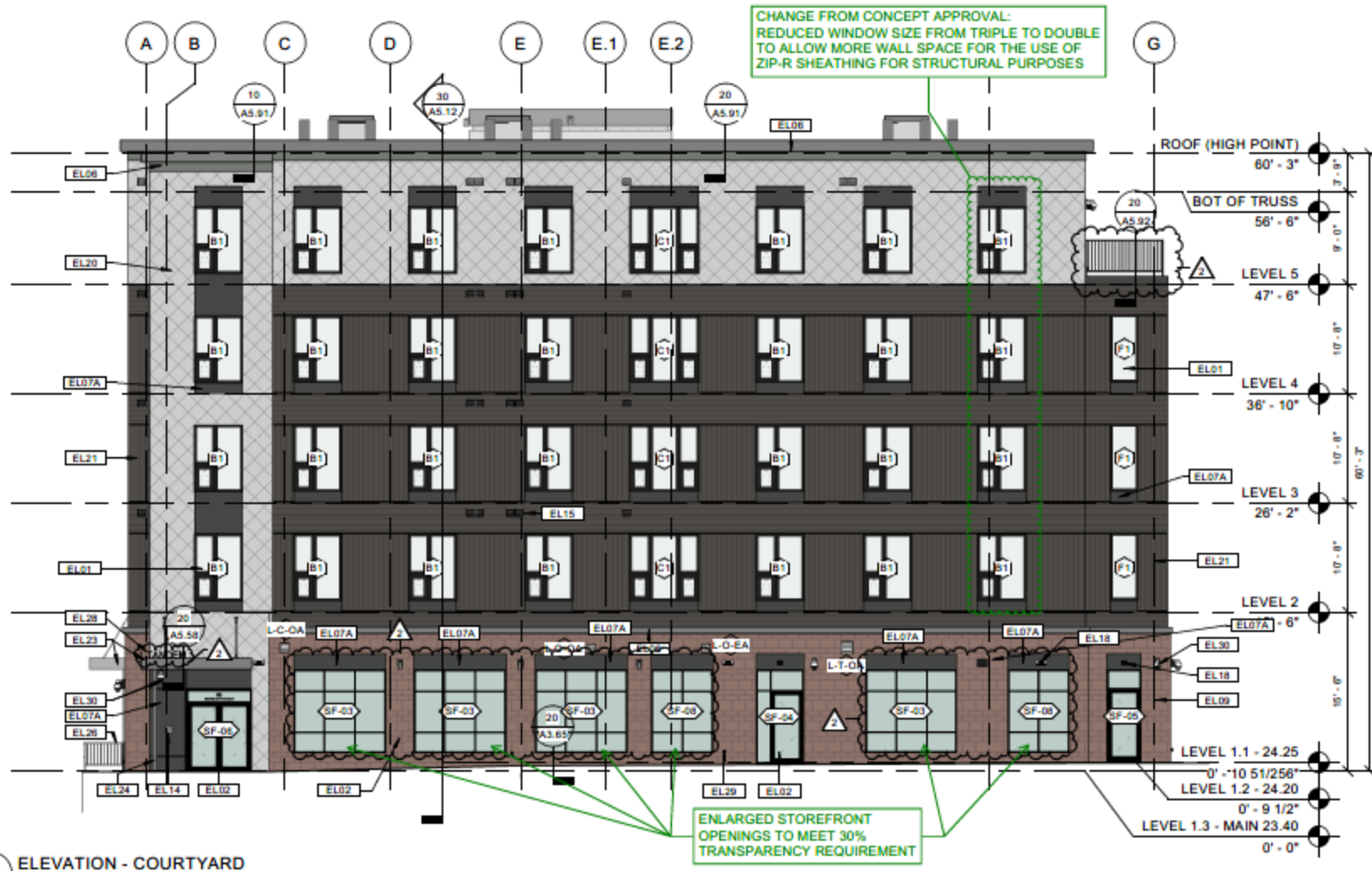


Parcel 9 | Phase II

Providence, RI | January 5, 2023 | 20024 | © The Architectural Team, Inc.

View From Parking Lot

# Updated Elevations



# Updated Elevations



**10 ELEVATION - BESSIE WAY**  
Scale: 1/8" = 1'-0"

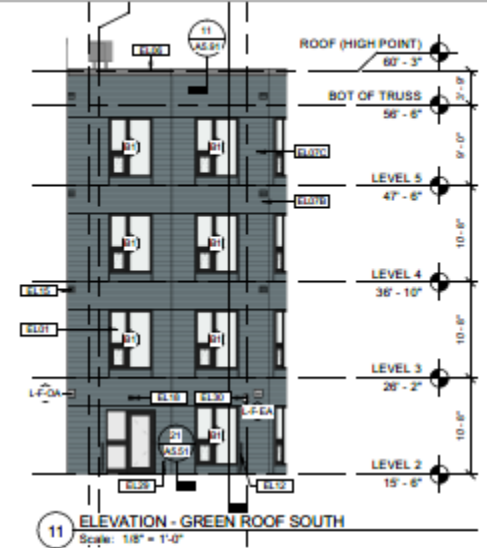
CHANGE TO OPEN GRILLE GARAGE DOOR TO MEET 30% TRANSPARENCY REQUIREMENT

- ROOF (HIGH POINT) 60'-3"
- BOT OF TRUSS 56'-6"
- LEVEL 5 47'-6"
- LEVEL 4 36'-10"
- LEVEL 3 26'-2"
- LEVEL 2 15'-6"
- LEVEL 1.3 - MAIN 23.40 0'-0"
- LEVEL 1.4 - 22.00 -1'-4 3/4"
- LEVEL 1.5 - 21.00 -2'-4 3/4"
- LEVEL 1.6 - GARAGE - 20.75 -2'-7 205/256"
- LEVEL 1.7 - VAULT - 20.25 -3'-1 205/256"

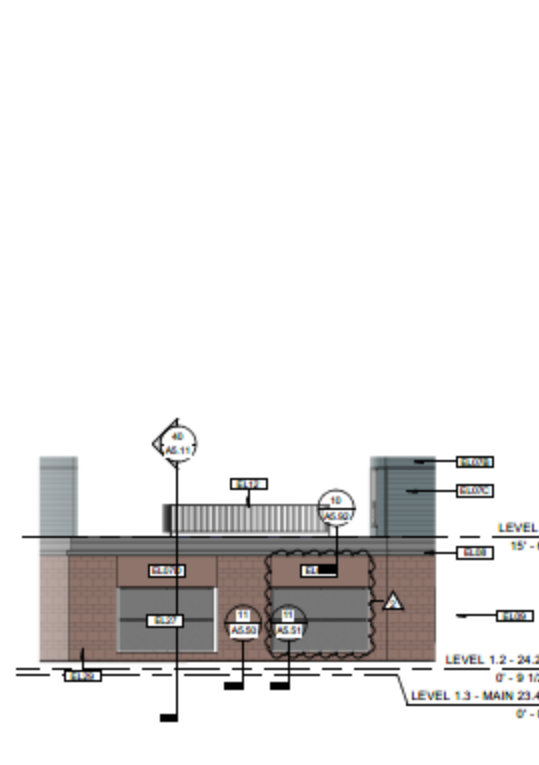
# Updated Elevations



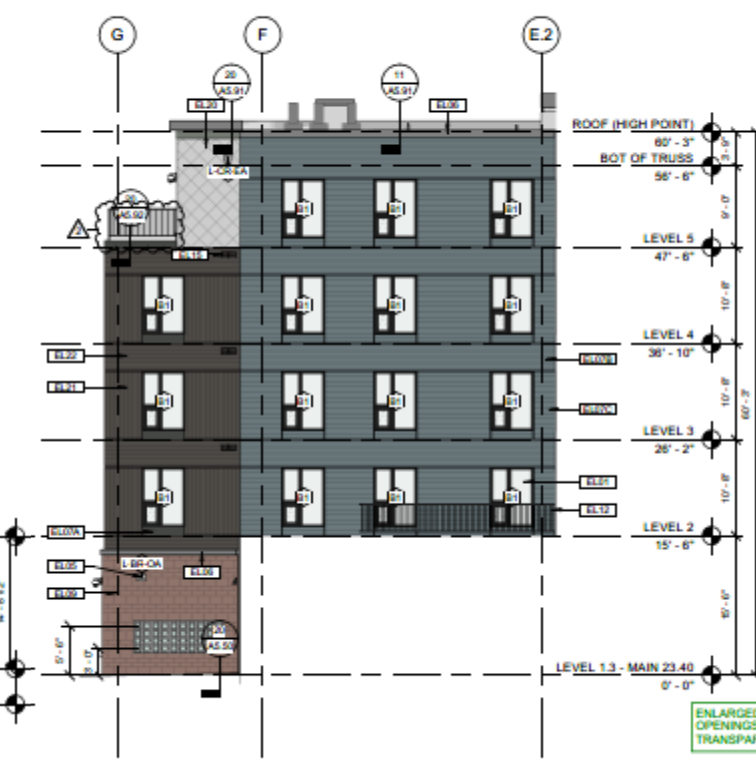
21 ELEVATION - GREEN ROOF WEST  
Scale: 1/8" = 1'-0"



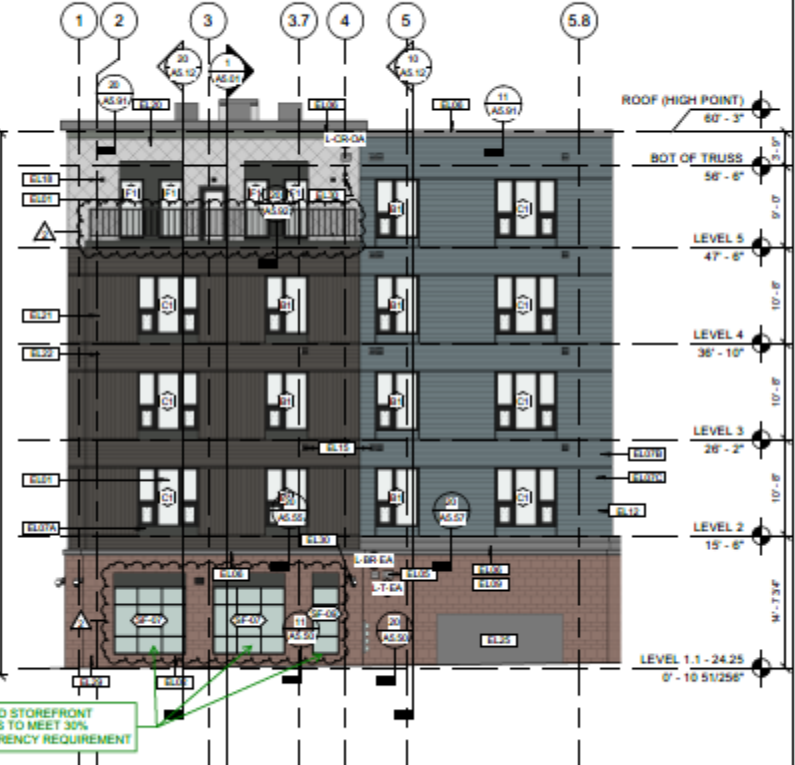
11 ELEVATION - GREEN ROOF SOUTH  
Scale: 1/8" = 1'-0"



30 ELEVATION - CITYWALK SOUTHEAST - 2  
Scale: 1/8" = 1'-0"



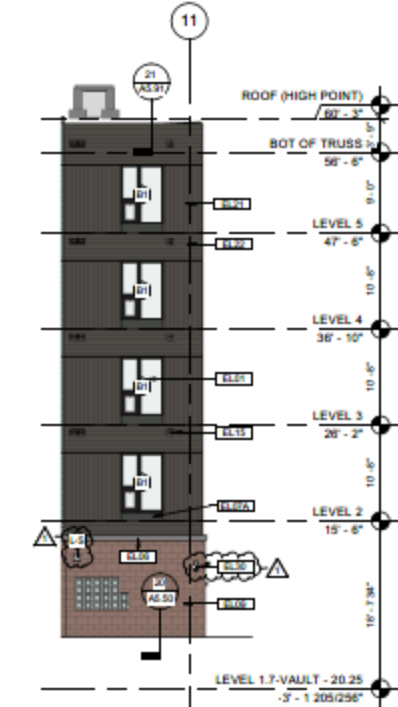
20 ELEVATION - GREEN ROOF EAST  
Scale: 1/8" = 1'-0"



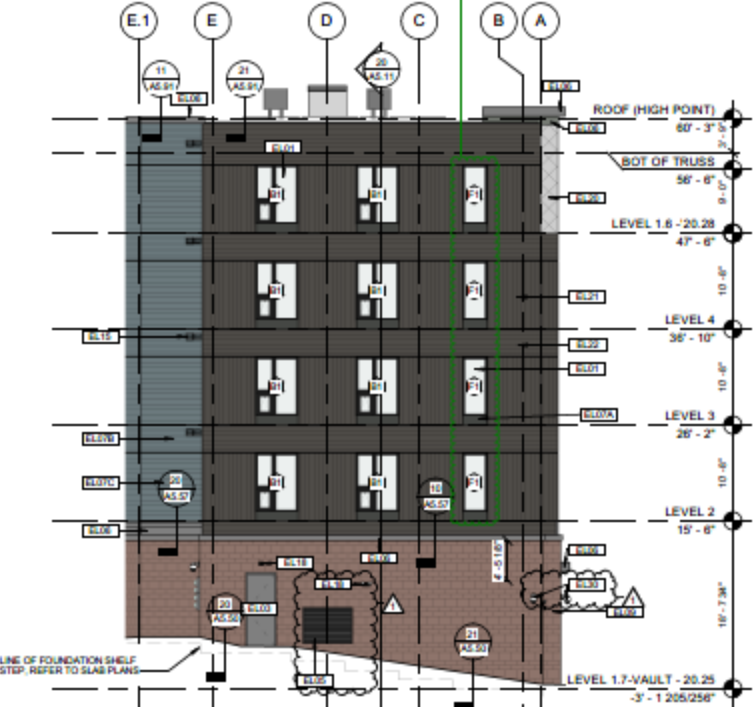
10 ELEVATION - CITY WALK SOUTH  
Scale: 1/8" = 1'-0"

# Updated Elevations

CHANGE FROM CONCEPT APPROVAL:  
WINDOW STACK REDUCED TO SINGLE WINDOW TO  
COMPLY WITH BUILDING CODE REQUIREMENT OF  
ALLOWED OPENING PERCENTAGE WITHIN 3'-5'  
OF THE PROPERTY LINE (MAX 15%)



12 ELEVATION - EAST TOWER - SOUTH  
Scale: 1/8" = 1'-0"



11 ELEVATION - EAST  
Scale: 1/8" = 1'-0"



10 ELEVATION - CITY WALK SOUTHEAST - 1  
Scale: 1/8" = 1'-0"

*Thank You!*

