



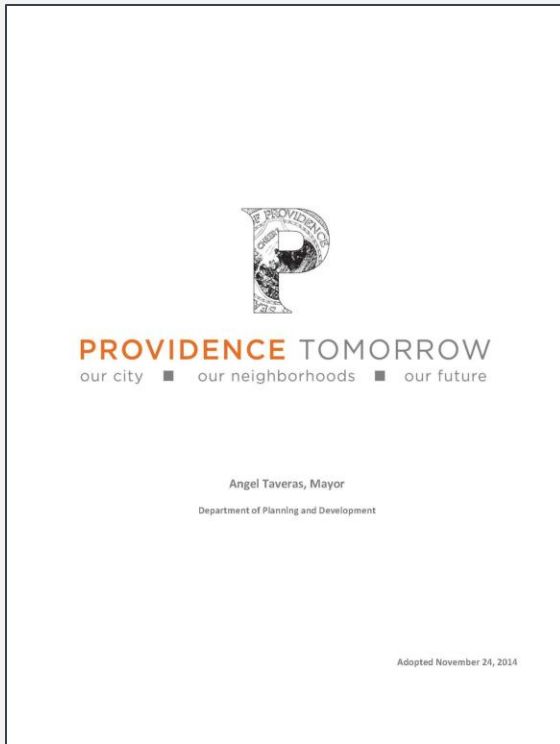
MAYOR BRETT P. SMILEY
CITY OF PROVIDENCE

City of Providence Comprehensive Plan Update

I-195 Redevelopment District Commission
June 11, 2024



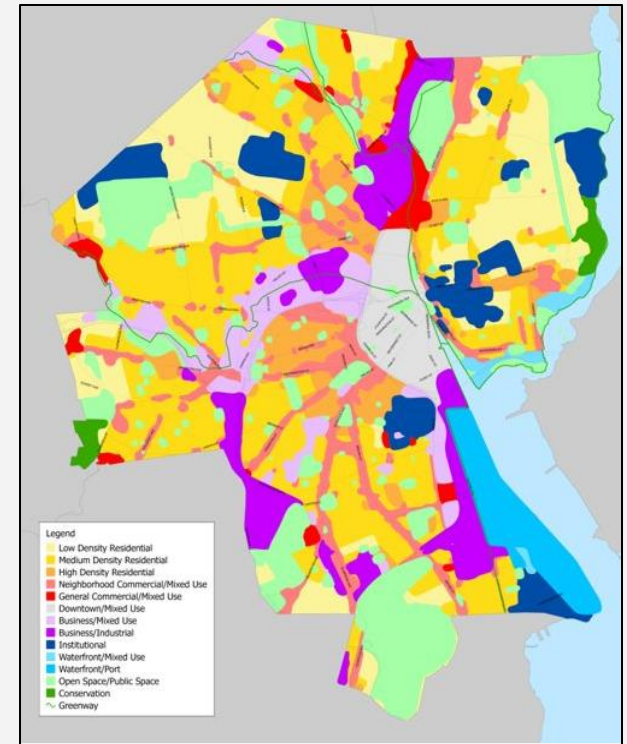
The Comprehensive Plan



Providence Tomorrow
(2014 - Today)



Elements of a
Comprehensive Plan



Future Land Use Map

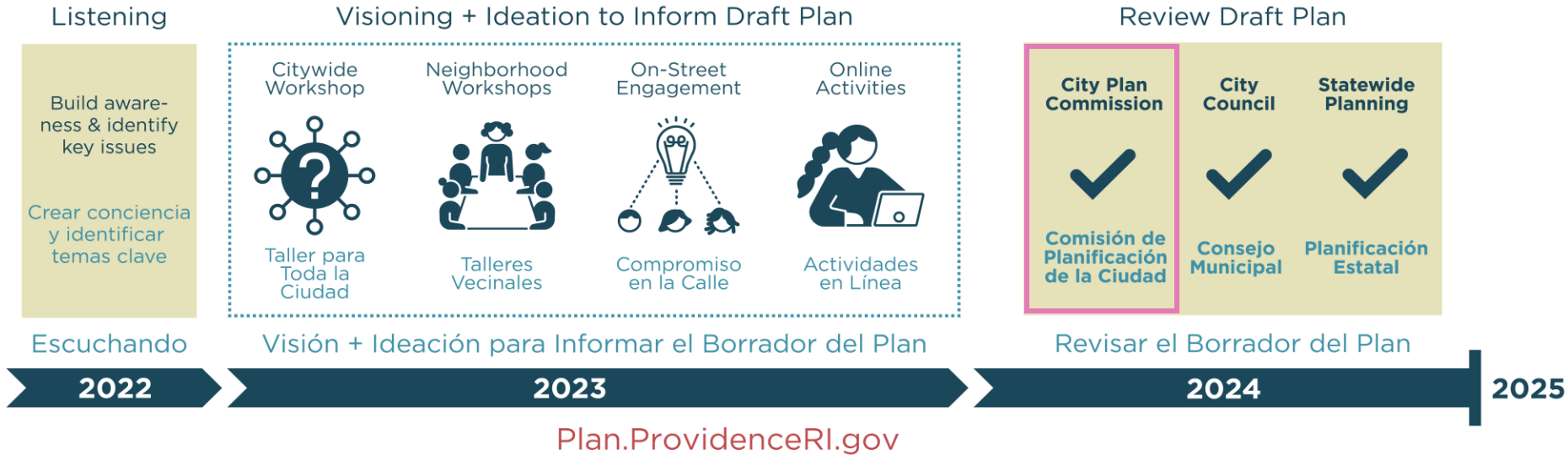
Comprehensive Plan Elements



- Land Use
- The Built Environment
- Sustainability, Resilience & the Environment
- People & Public Spaces
- Economic Development
- Arts & Cultural Resources
- Housing
- Mobility
- Community Services & Facilities



Engagement Process

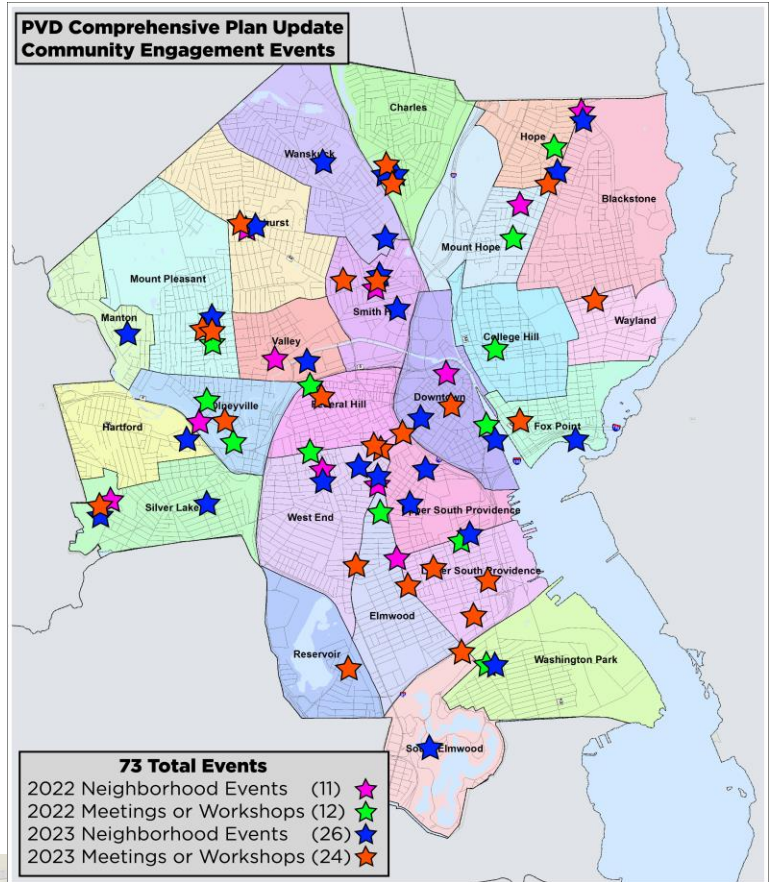


✓ 55+ neighborhood events with community partners

✓ 15 Ward Workshops with PVD City Council

✓ 2,000+ online submissions

Full engagement process summary at: plan.providenceri.gov





Community Survey Results

What issues need to be addressed as Providence grows over the next 20 years?

1 Build more quality, affordable housing

2 Provide safe, convenient, affordable transportation options

3 Improve sustainability & climate resilience

4 Provide & maintain quality City services & facilities.

5 Manage growth to preserve quality of life.

Full engagement process summary at: plan.providenceri.gov

Draft Plan

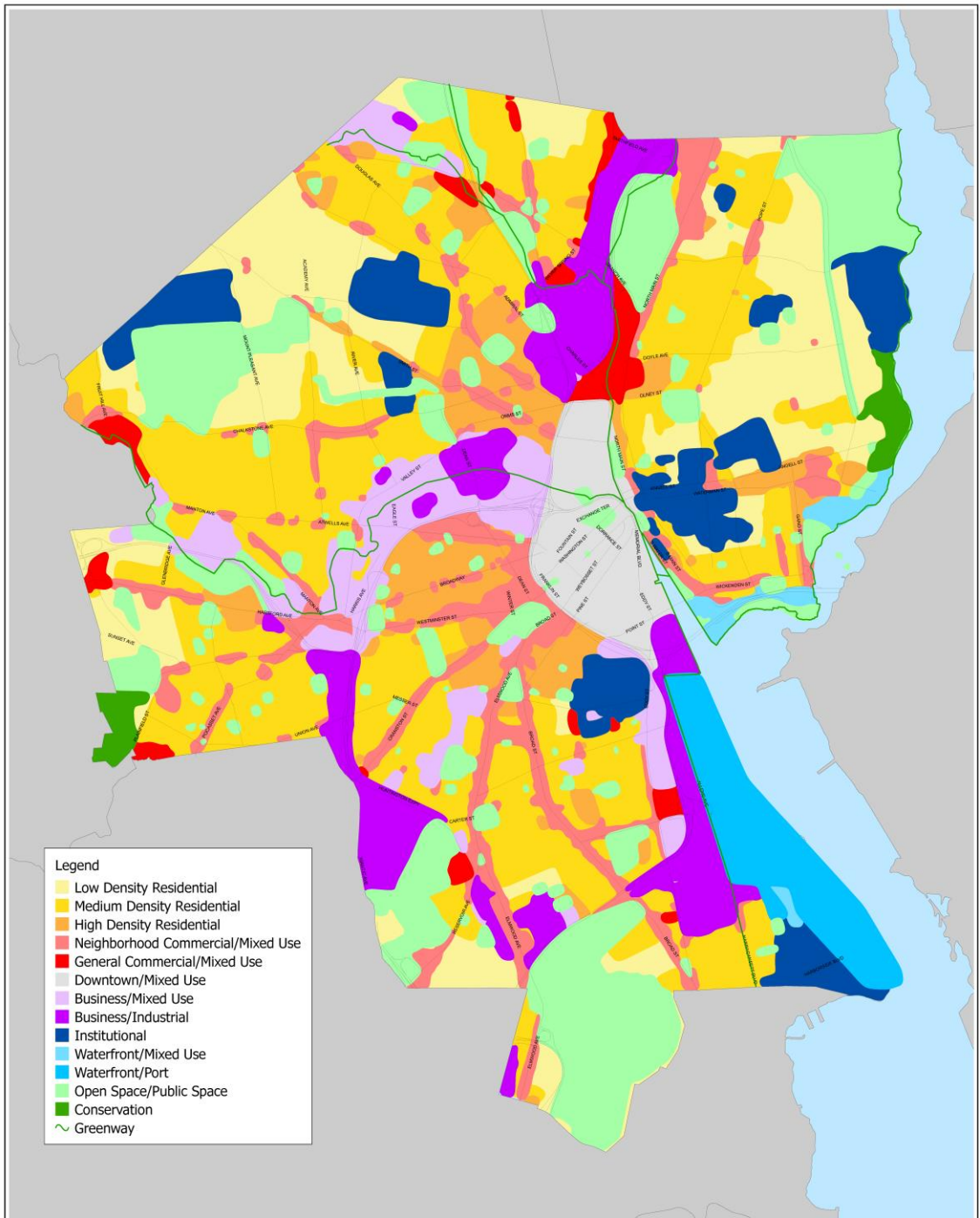


Overview

A vision for **dynamic, sustainable & inclusive growth.**

- ✓ Preserve PVD's unique places, communities, quality of life.
- ✓ Welcome new people, ideas, development, ways of living.
- ✓ Remove barriers to opportunity. Invest in key sectors.
- ✓ Improve city services, infrastructure, facilities.
- ✓ Connect people & places. Conserve nature.





Future Land Use map:

- An answer to "where & how should PVD grow?"
- Continue mixed-use growth downtown and on commercial corridors.
- Allow more housing in all residential areas:
 - ✓ Flexibility in low density
 - ✓ Allow existing scale in medium density
 - ✓ Expand multi-family apts where appropriate
- Align business/industrial uses with climate + environmental goals



Key Policies

Sustainability, Resilience & the Environment

Incorporate best practices to reduce fossil fuel emissions, improve resilience to climate change through green infrastructure and other methods, support environmental quality and conservation in targeted areas, and center equity and environmental justice.



September 2022 Floods
Corey Welch, WPRI



Key Policies

Built Environment

Improve design review of new development; encourage adaptive reuse, contemporary design, and green building practices; and expand historic preservation efforts.



Smith Hill's Holden Street
Providence Preservation Society



Key Policies

Economic Development

Grow Providence's economy through investments in key sectors like life sciences, blue economy, and arts & culture, while supporting workforce & small business development and improving city services & infrastructure.



The Steel Yard's Iron Pour



Key Policies

Mobility

Transition to a safer, better-connected transportation system for all Providence residents and visitors. Increase trips made via public transport, walking, and biking in alignment with local plans and federal guidelines.



The R Line
Rhode Island Public Transit Authority



Next Steps



Share your feedback!

Review draft plan at plan.providenceri.gov

- Public comment at City Plan Commission hearing on June 18th
- Complete online feedback form or email us: planning@providenceri.gov



THANK YOU

www.plan.providenceri.gov

planning@providenceri.gov

